

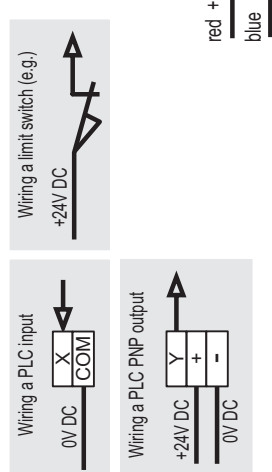
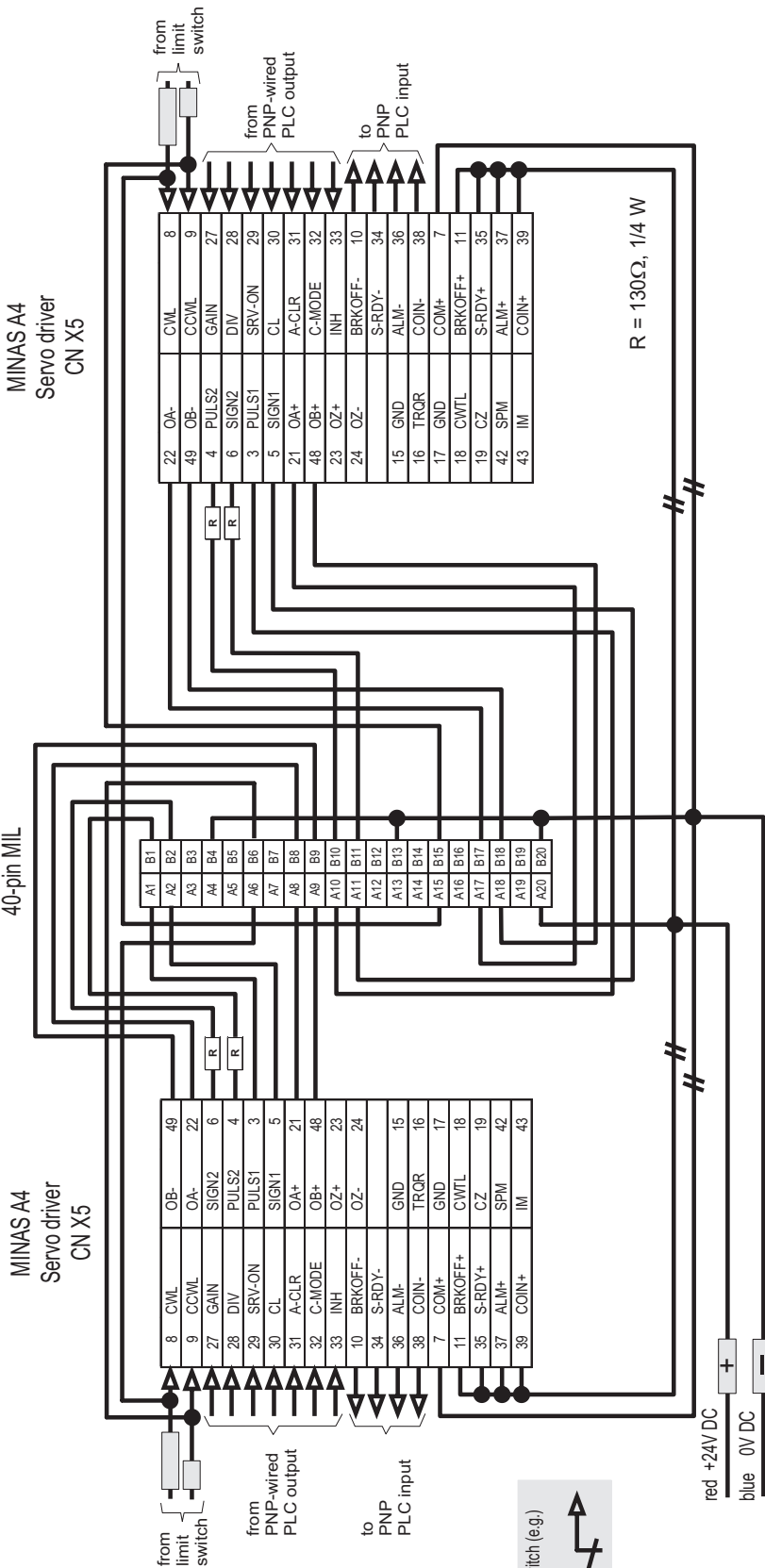
Connection cable MINAS A4/A5 servo driver to positioning unit FPG-/FP2-PPx1

2 axes, 2 x 50-pin connector, 40-pin MIL connector, loose wires for PNP I/O wiring, length L meters

Wire color assignment

Signal	Axis	CN X5 Pin	Label (ring)	Wire Color
GAIN		27		white
DIV		28		brown
SRV-ON		29		green
CL	1	30	red	yellow
A-CLR		31		grey
C-MODE		32		pink
INH		33		red-blue
CWL		8	red, long	black
CCWL		9	red, short	black
BRKOFF-		10		black
S-RDY-	1	34		violet
ALM-		36	red	white-green
COIN-		38		brown-green
GAIN		27		white
DIV		28		brown
SRV-ON		29		green
CL	2	30	blue	yellow
A-CLR		31		grey
C-MODE		32		pink
INH		33		red-blue
CWL		8	blue, long	black
CCWL		9	blue, short	black
BRKOFF-		10		black
S-RDY-	2	34	blue	violet
ALM-		36		white-green
COIN-		38		brown-green
+24VDC	1,2			red
0VDC	1,2			blue

Axis 1 ← FPG-/FP2-PPx1 40-pin MIL → Axis 2



Remarks:

- This cable is designed for use with transistor output type positioning units (e.g. FPG-PPx1, FP2-PPx1) in combination with a PNP type PLC (e.g. FPG-C28P2H) or PNP type I/Os (e.g. FP2-XY64D2P).
- The mentioned wire colors refer to the connection wires only. The wire colors of the internal wiring of the connectors may be different.
- Please use the same 24VDC power supply for this cable and the connected PLC I/Os.
- Please insulate unused wires of the cable to avoid short circuits or unintended behavior.
- Set parameter Pr40=0 (i.e. use photo coupler input) on the servo driver(s).
- Additional wiring (e.g. inputs for home or near home) to the positioning unit's connector is possible.
- For further information, please refer to the corresponding manuals.

Specification Sheet

Product Number	Description		
DVOP0985W-L	Connection cable PPx1 - 2 Servos		
Version	Date	designed by	approved
1.3	15.02.2011	Aicher	Millauer